



RajGres

EXCLUSIVE ROME
COLLECTION



The
WorkShop
FACTORY

"The Workshop Factory" intenta plasmar en cada una de sus piezas cerámicas una gran cantidad de diseños, tendencias, colores y gráficas. Todas ellas nacidas del propio diseño interno o del diseño adquirido externamente tanto de grandes diseñadores como de los pequeños artesanos prácticamente desconocidos. Intentando siempre que nuestra cerámica sea la principal protagonista de todos y cada uno de nuestros eventos, presentaciones y colecciones.

Llamar la atención con lo que mejor sabemos hacer, plasmar en cerámica todas las ideas y tendencias detectadas y desarrolladas. Y todo ello con la mejor presentación y puesta en escena que somos capaces de desarrollar para mostrar nuestros fabricados cerámicos. Nuestro diseño es nuestra cerámica, nuestro diseño es nuestra única marca, siempre poniendo a prueba nuestra capacidad para dibujar el futuro.

"The Workshop Factory" always tries to translate into its own ceramic pieces a great quantity of Original Designs, Trends, Colours and graphics. These are brought by our Design Lab, Great Designers or even Local Craftmen from all over the world. Our Tiles are definitely the main character in our events, presentations and collections.

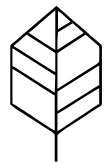
Catching Your Eye is what we do best, with translating into ceramic all the Trends that have been previously detected and properly developed. And all this with the best presentation and staging we can offer. Our design is our Tile, our Design is our one and only Brand, always testing our ability to draw the future.

COLLECTION
Rome

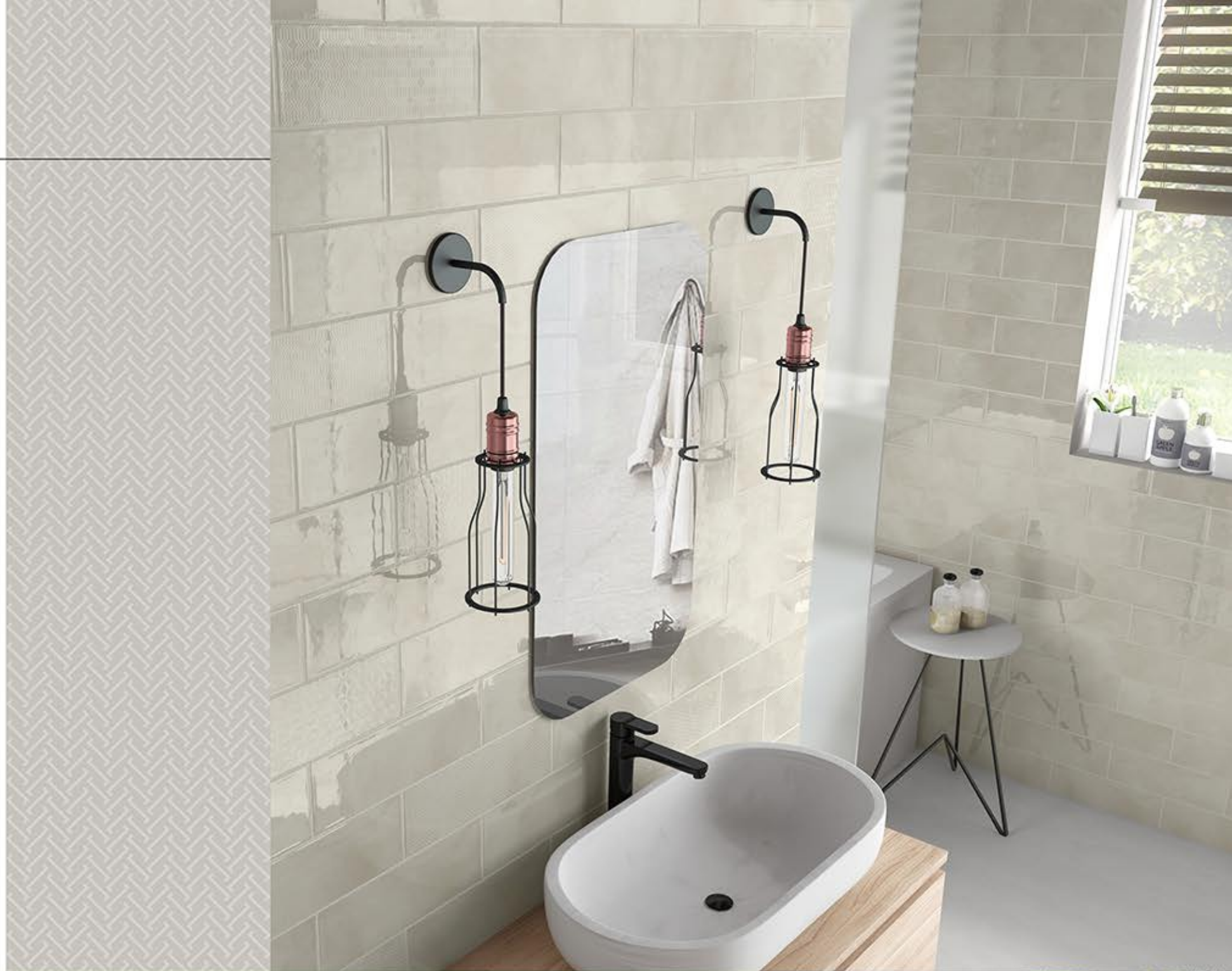


TRADITION INNOVATION

We at Subway Tiles are providing over 100 types of different color, design and pattern selection in Tiles and 100 types of Indian natural stones and are continuously adding new and more tiles and stones to our library. Innovate on designing and technological front. Stay updated and evolve continuously as per market trends. Create a fruitful working environment. To expand our portfolio and offer multiple tiling solutions. To lead the ceramic industry with exclusive collection and exceptional service bucket.



RajGres



Autorización
Ambiental
Integrada.

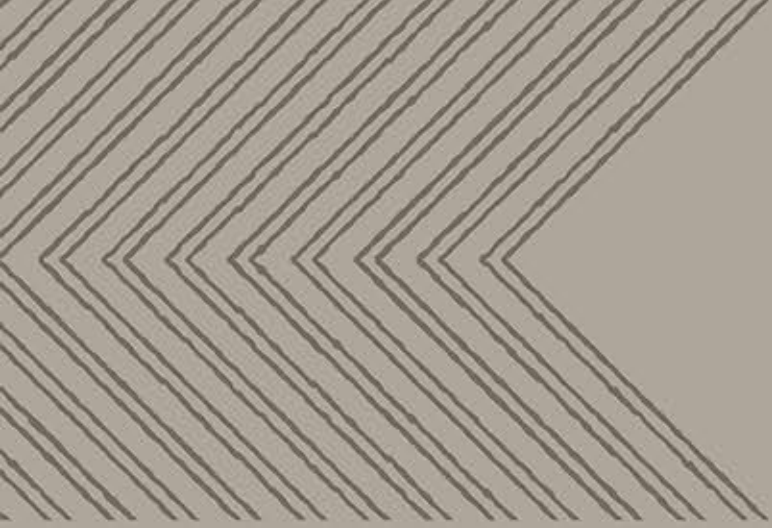
Environmental
Authorization
Included.



Life is colorful

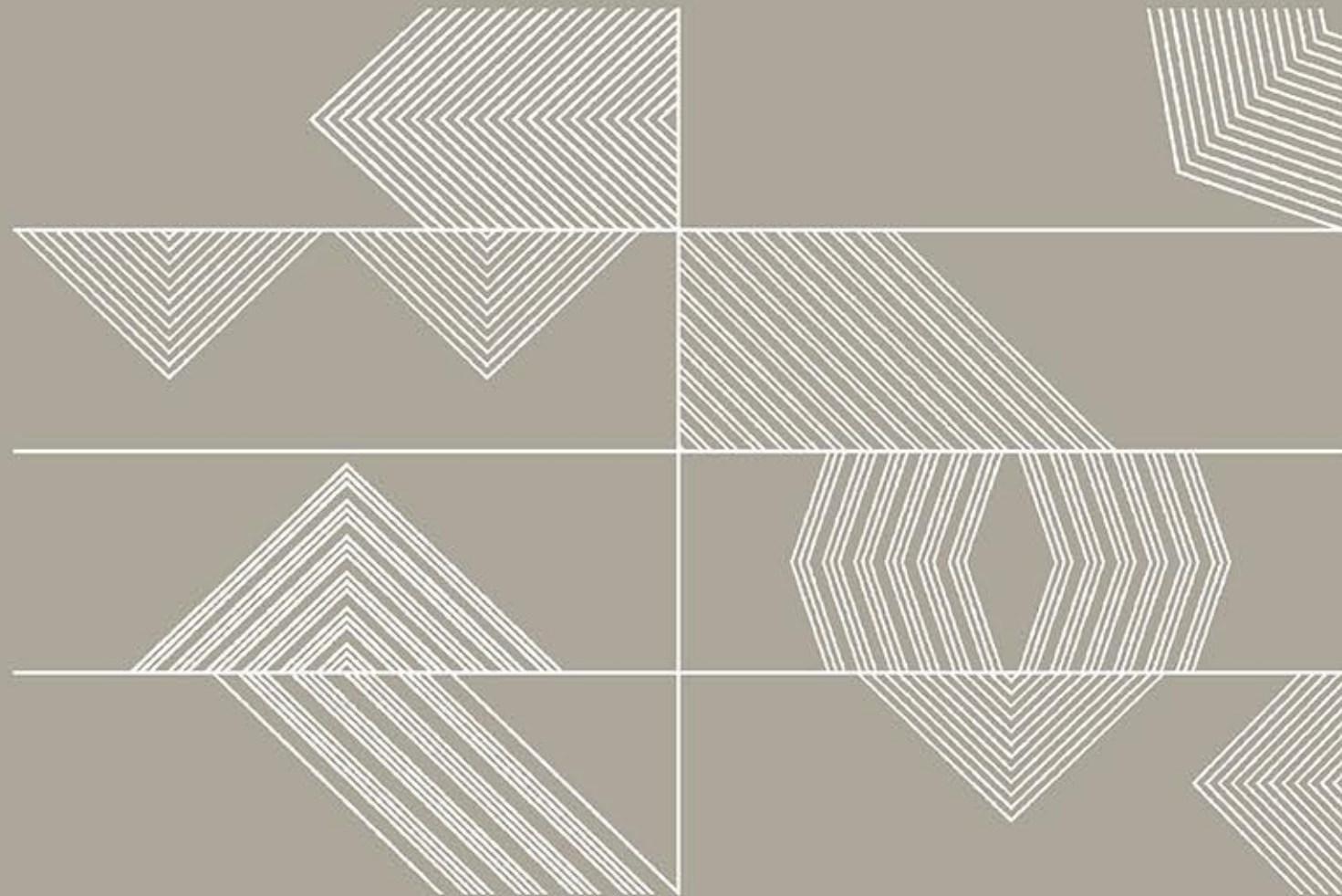
We gradually find ourselves in a black and white world, where some things that we do are good and other things are bad. These are the first “colors” that we learn about in life. ... You will get to know the colors of love, joy, surprise, anger, sadness and fear.



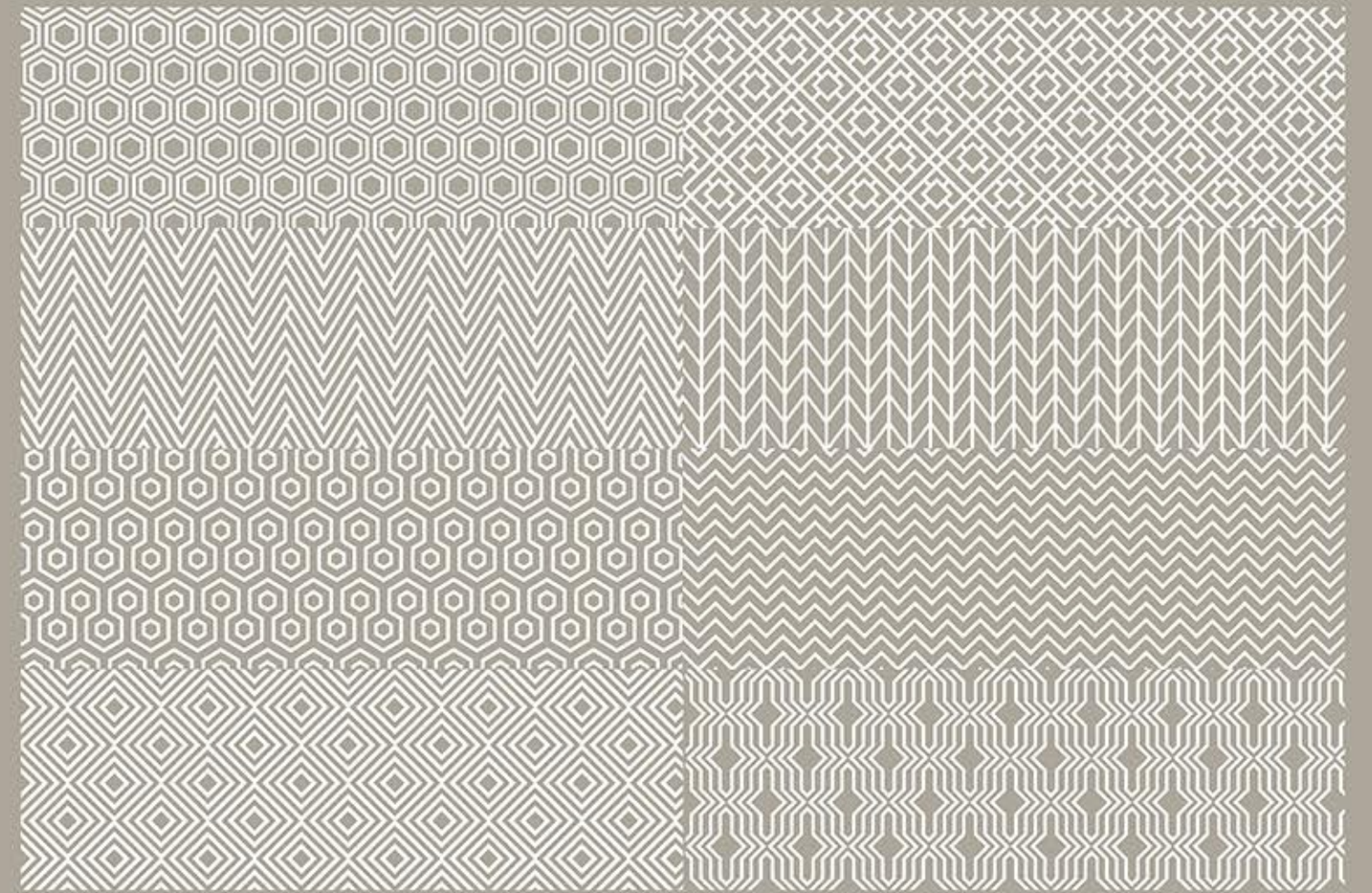


*We Give You 2 Decor Options In Rome Series,
1 is GEO and 2nd Is ERA, You can Apply Any One Is with Any Base Color.*

Rome ERA



Rome GEO



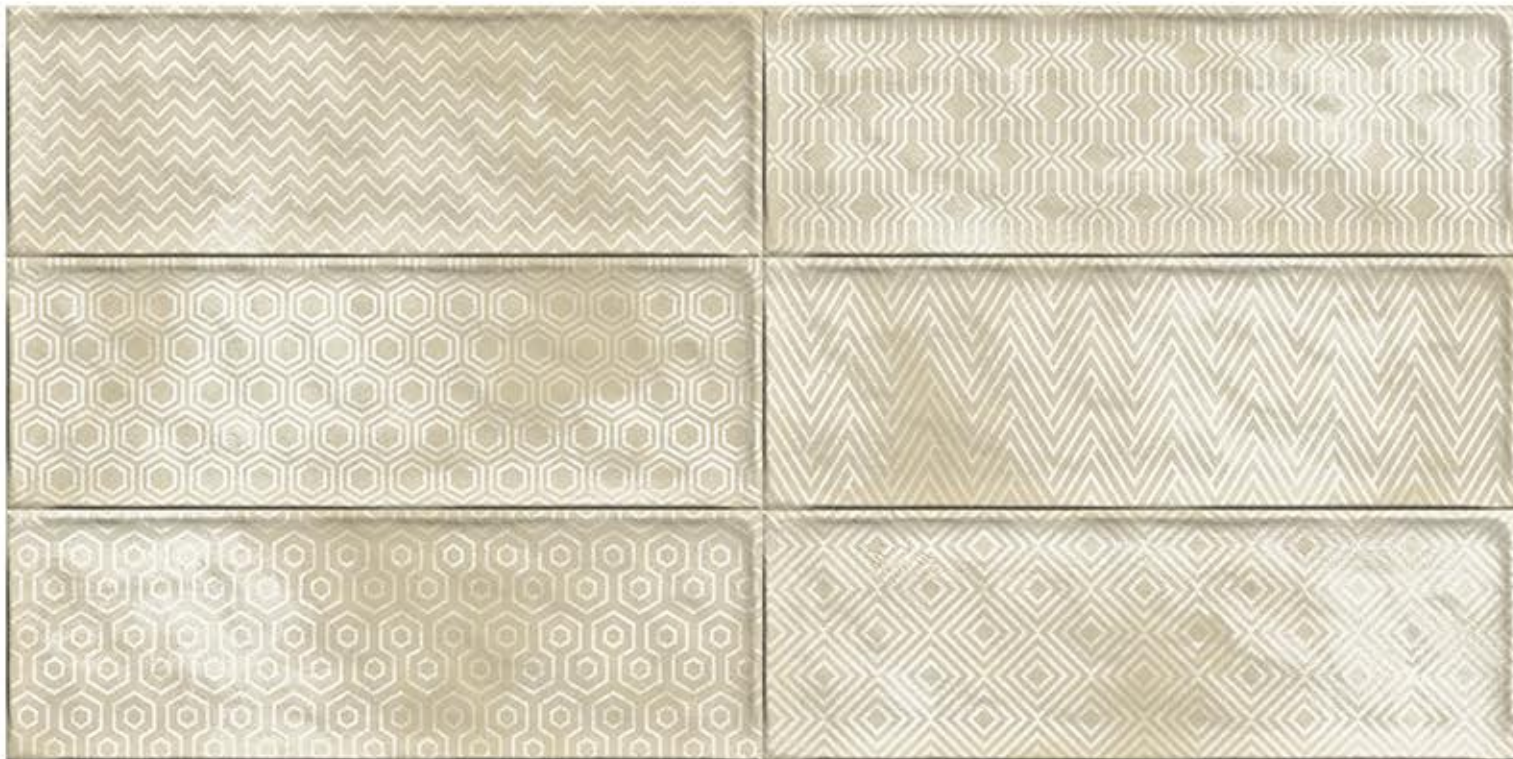
ROME BEIGE

4" X 12"

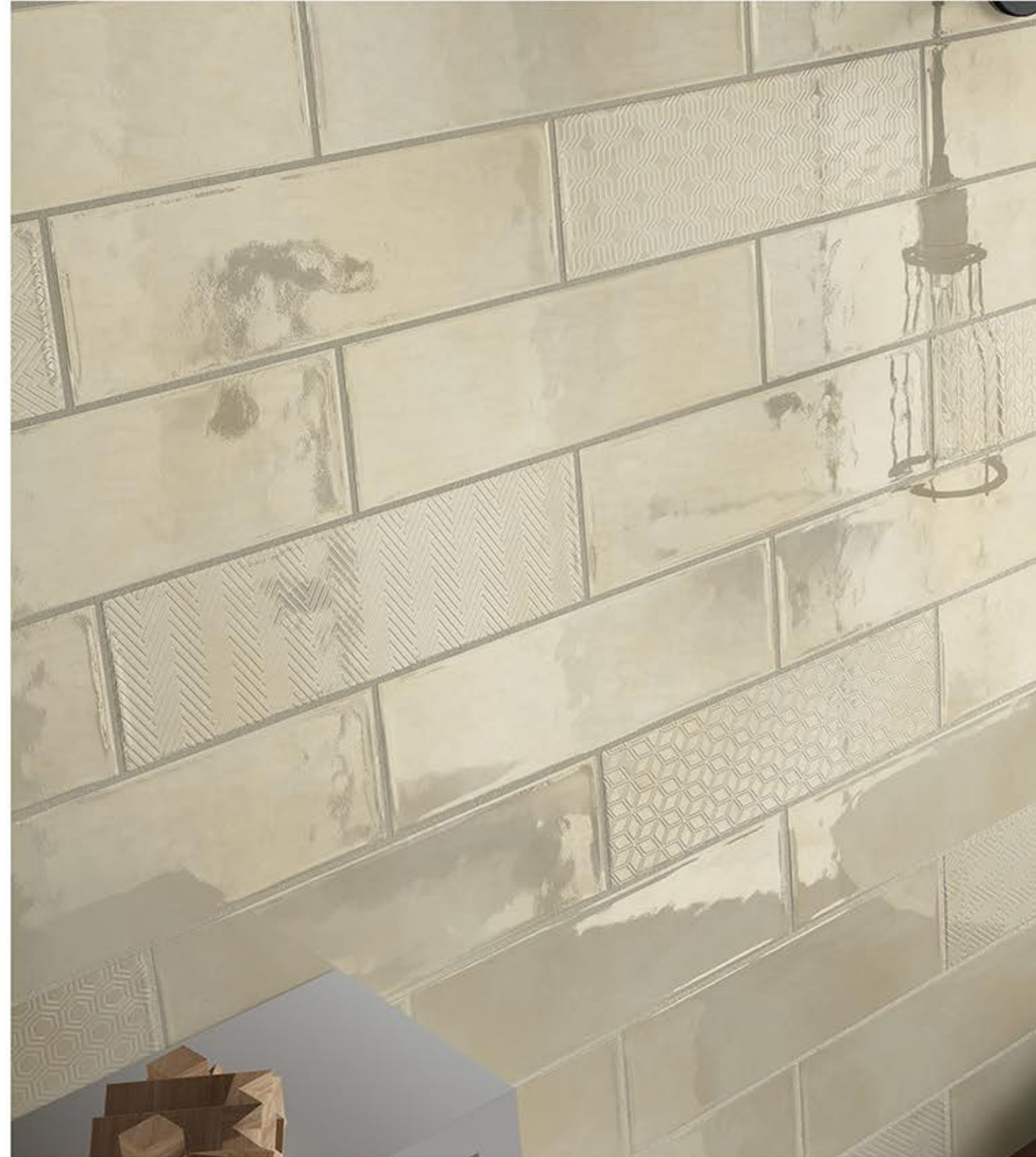
ROME BEIGE IS CHARACTERIZED BY AN ORGANIC AND NATURAL GEOMETRY THAT GIVES THE SPACE A TIMELESS CHARACTER WITH ALL LUXURY.



ROME BEIGE



ROME BEIGE GEO





ROME BROWN

4" X 12"

Rome brown is a natural color that evokes a sense of strength and reliability. It's often seen as solid, much like the earth, and it's a color often associated with resilience, dependability, security, and safety. Brown can also create feelings of loneliness, sadness, and isolation.



ROME BROWN



ROME BROWN ERA





ROME CHOCO

4" X 12"

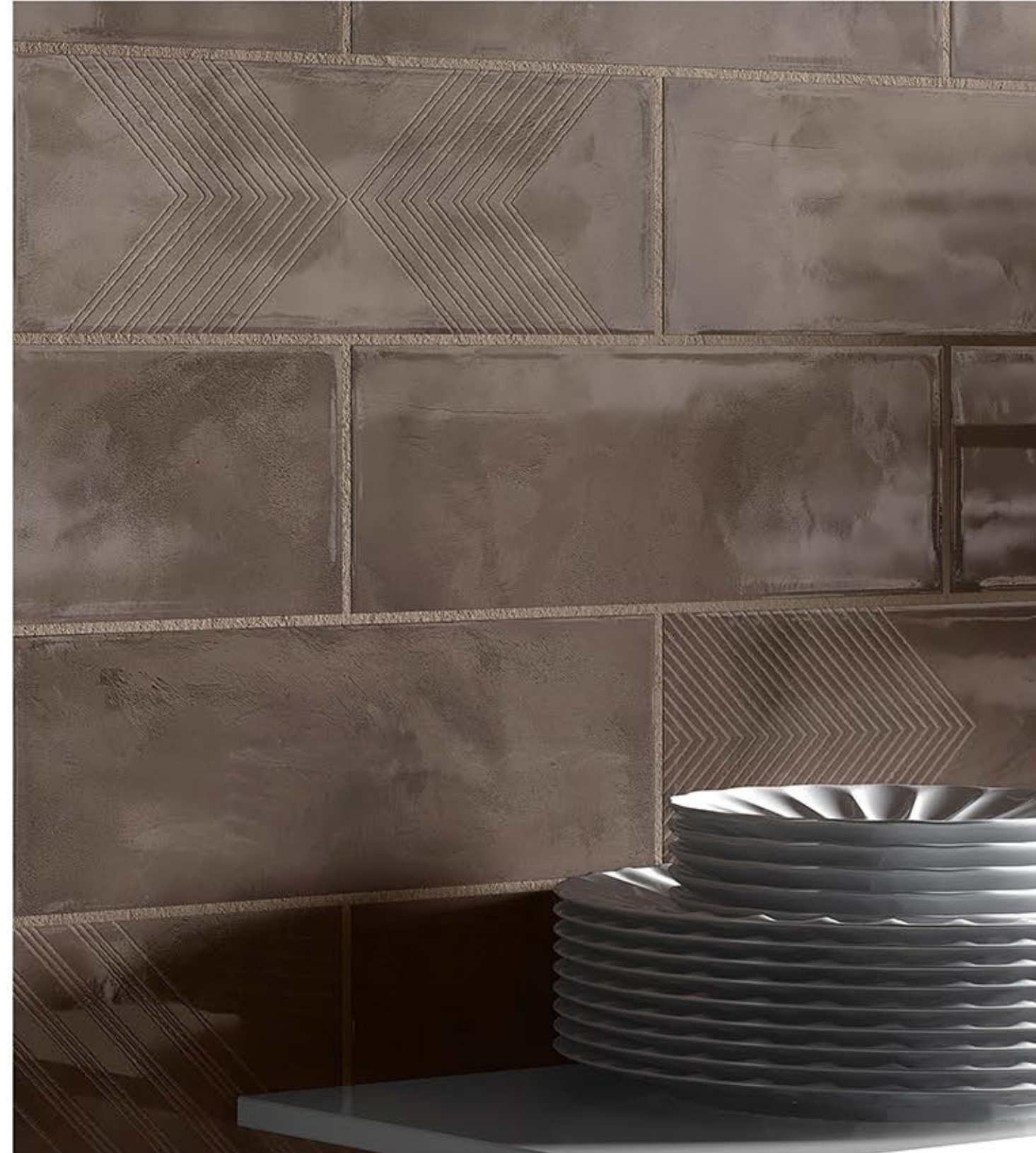
Rome Choco is a tone of dark brown that resembles chocolate. At right is displayed the color traditionally called chocolate.



ROME CHOCO



ROME CHOCO ERA





ROME AQUA

4" X 12"

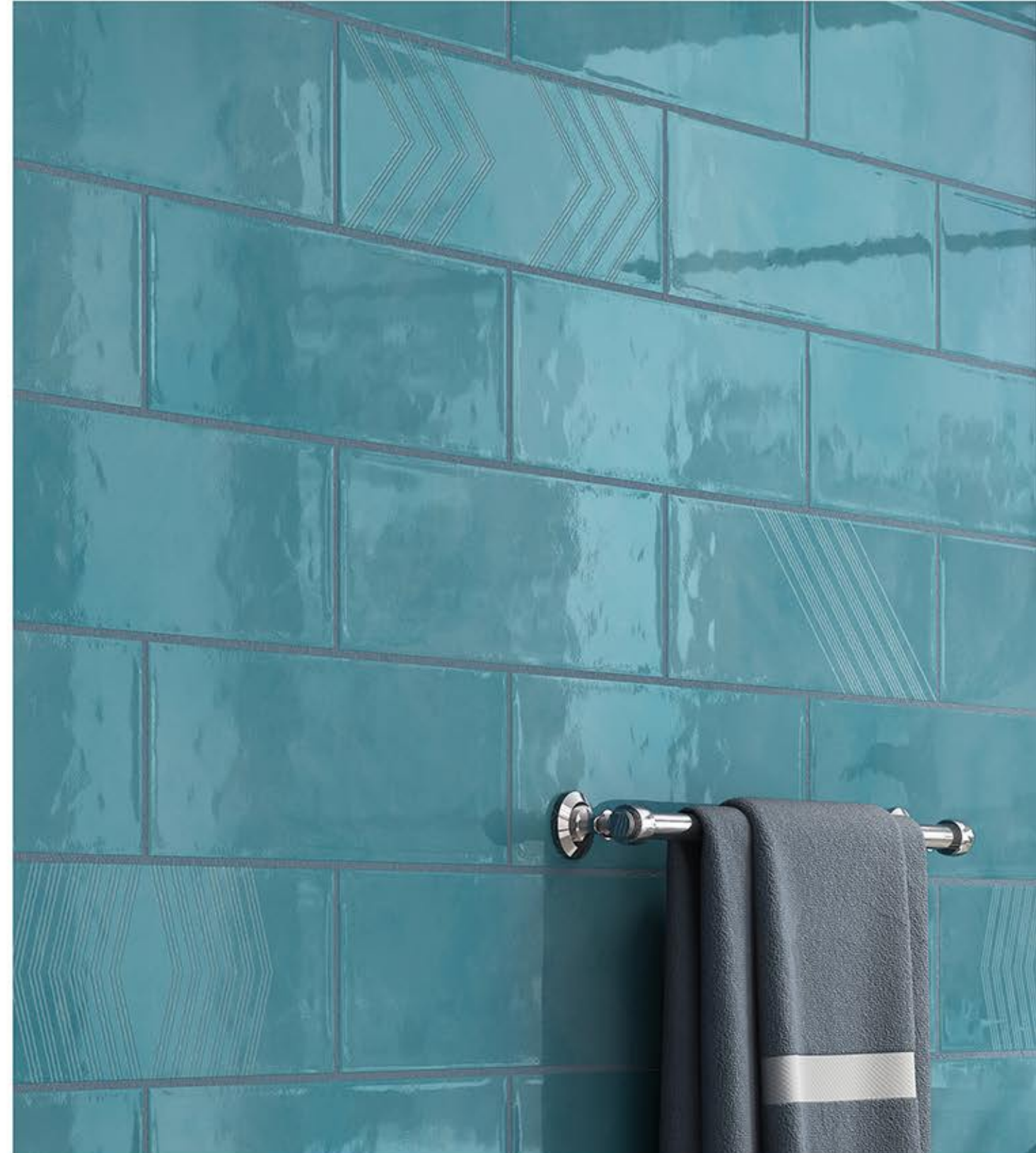
Rome Aqua has a vibrant, striking tone, making it a wonderful accent in designs. You can combine it with other cool colors like dark grays or black, or you can pair it with warm colors like yellows or bright oranges for something that pops.



ROME AQUA



ROME AQUA ERA





ROME BLUE

4" X 12"

Rome Blue has more complex and contradictory meanings than any other color. These can be easily explained by pinpointing by the specific shade of blue.



ROME BLUE



ROME BLUE ERA





ROME CHARCOL

4" X 12"

Rome charcol is the color of intellect and of compromise. It's a diplomatic color, negotiating all the distance between black and white. We typically consider gray to be conservative, elegant, and cool, though it can be a bit mysterious.



ROME CHARCOL



ROME CHARCOL ERA





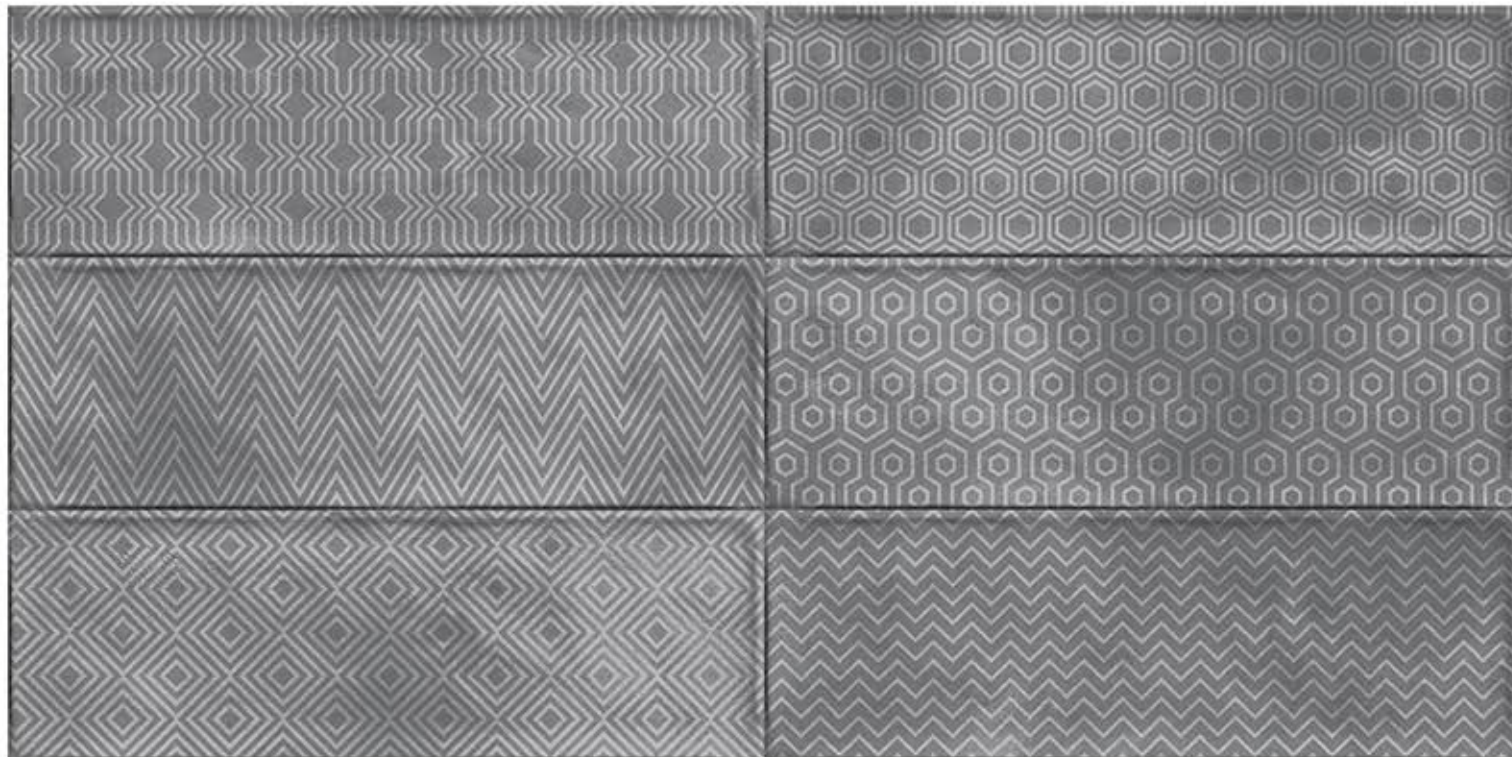
ROME GRAY

4" X 12"

Rome grey represents neutrality and balance. Its color meaning likely comes from being the shade between white and black. However, grey does carry some negative connotations.



ROME GRAY



ROME GRAY GEO





So
fresh
& so
clean
clean

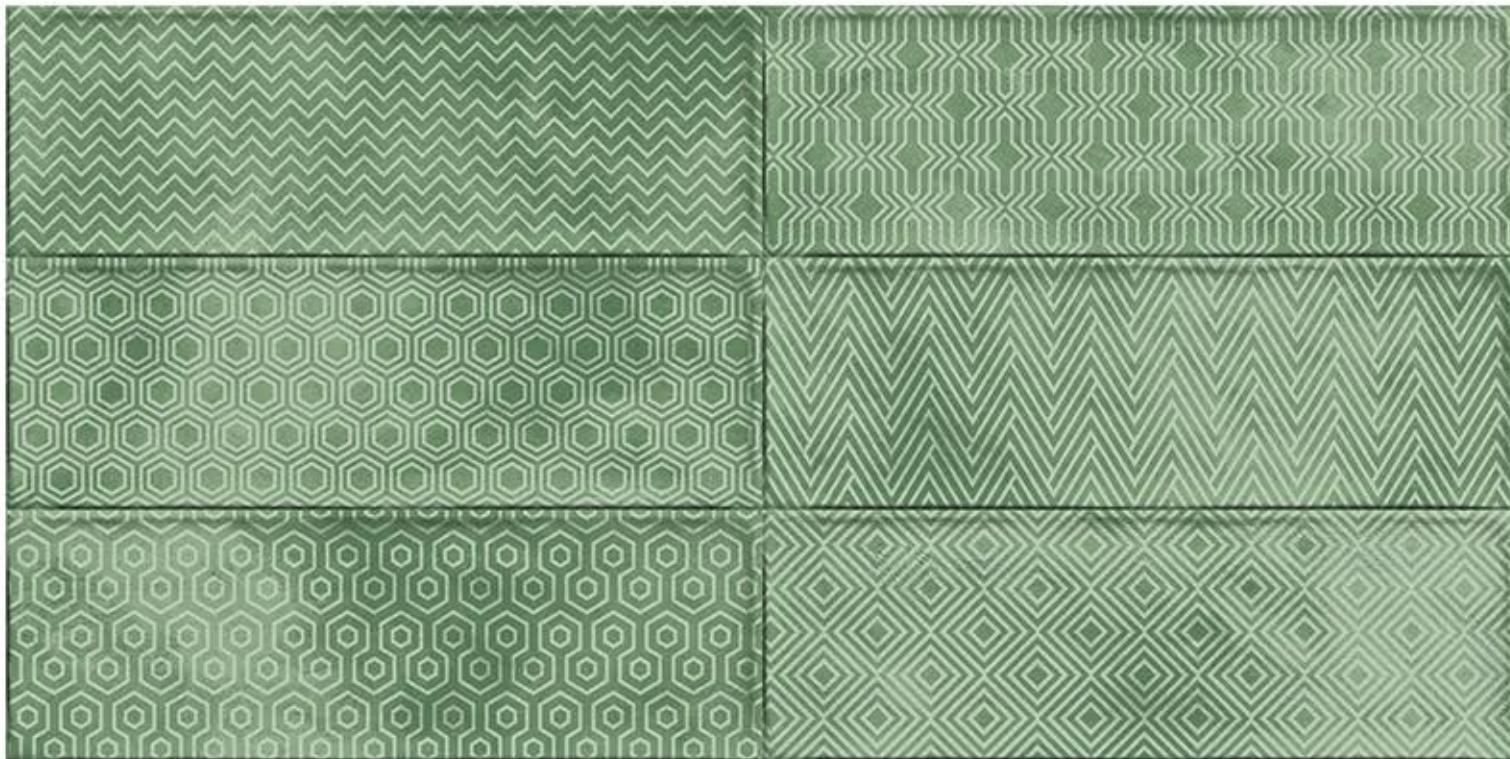
ROME GREEN

4" X 12"

Rome Green is a cool color that symbolizes nature and the natural world. Perhaps because of its strong associations with nature, green is often thought to represent tranquility.



ROME GREEN



ROME GREEN GEO





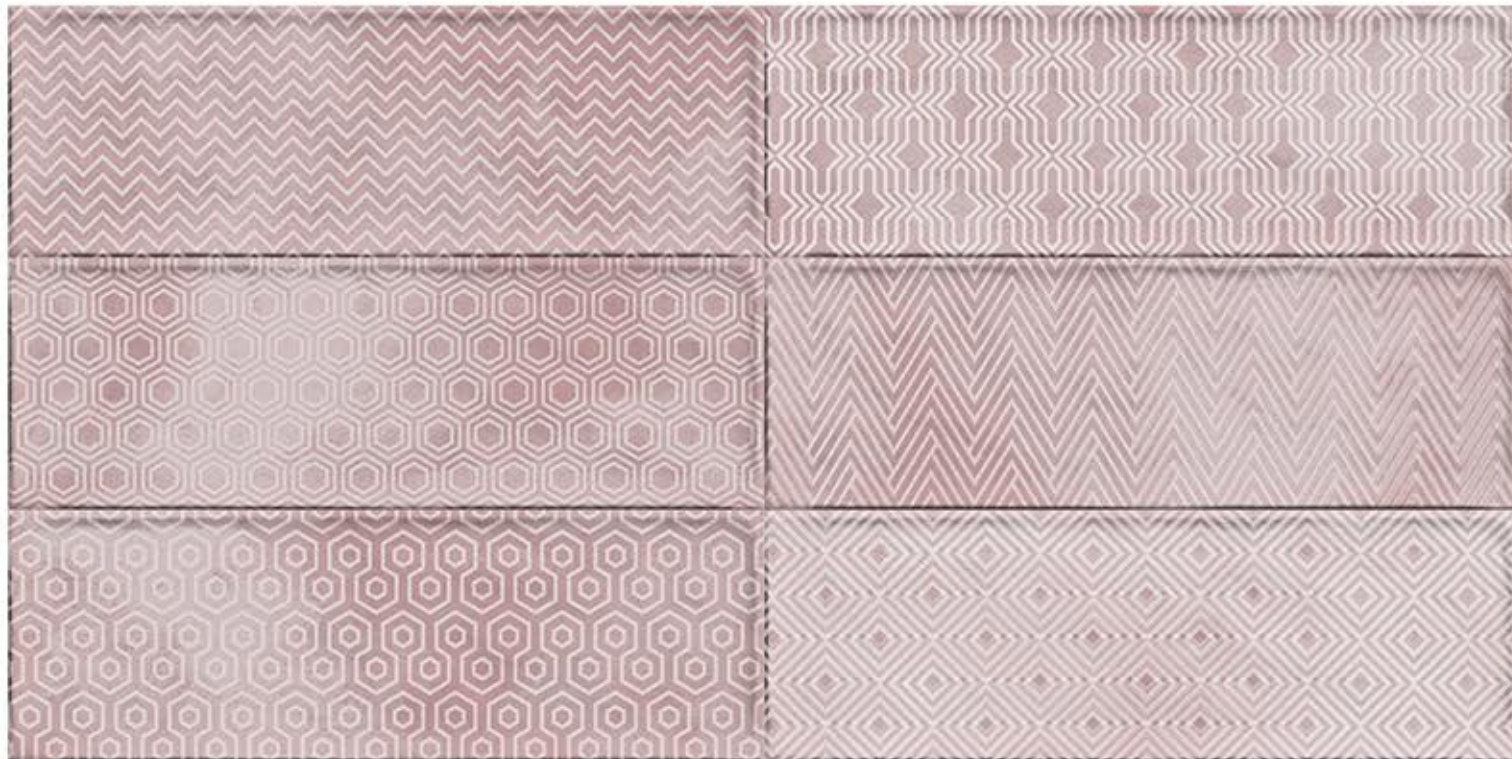
ROME PINK

4" X 12"

Rome Pink is thought to have a calming effect. One shade known as "drunk-tank pink" is sometimes used in prisons to calm inmates.



ROME PINK



ROME PINK GEO





ROME YELLOW

4" X 12"

Rome Yellow's positive qualities of yellow can also lead to abrasion when it is used too dramatically. While it can be attention grabbing, it can also lead to agitation in the observer. Though it appears warm and bright, yellow can lead to visual fatigue.



ROME YELLOW



ROME YELLOW ERA





A dark grey floating shelf mounted on the wall. It holds four white plates with a crown logo and the numbers 1, 2, 3, and 4. To the right of the plates are a clear glass pitcher, two glass dispensers with black stoppers, and a small framed picture of a salad.

Stacks of white dishes on the countertop. From left to right: a stack of six small white bowls, a stack of six medium white bowls, and a stack of ten white plates.

A collection of clear glass items on the countertop, including several small glasses and a larger glass pitcher.

A stack of three books on the countertop. The top book has a red cover, the middle one has a blue cover, and the bottom one has a white cover.

A wooden knife block containing several black-handled knives, positioned on the left side of the countertop.

A silver thermos with a cookie illustration and the word 'Cookies' written on it, sitting on the countertop.

A stack of books on the countertop, including one with 'ORWELL' and 'NINETEEN' visible on the spine.

A round wooden cutting board with a decorative pattern and text, resting on the countertop.



10 mm

SMART SOLUTION FOR RENOVATIONS

SOLUZIONI INTELLIGENTI PER LA RISTRUTTURAZIONE



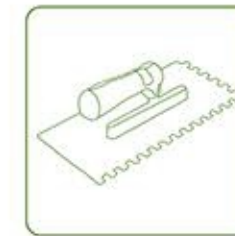
IDEALE PER LE RISTRUTTURAZIONI

PIASTRELLA • COLLA IN MENO DI 1 CM

Ideal for renovations
Thickness of glue and tile less than 1 cm

Idéal pour les rénovations
Carreau + colle moins d'un centimètre

Ideal für Renovierungen
Verklebung der Fliesen weniger als 1 cm



FACILE E VELOCE DA INSTALLARE

35 % IN MENO TEMPI DI INSTALLAZIONE

Easy to install
Save 35% of installation time

Facile et rapide à installer
35% en moins sur le temps d'installation

Einfach und schnell zu installieren
35% zeitsparend für die Installation



MATERIALE ULTRA LEGGERO

RIDUZIONE DEL 40% DEL PESO

Ultralight material
40% weight reduction

Matériau ultraléger
Réduction du poids du 40%

Ultraleichtes Material
40% Gewichtsreduzierung



MAGGIORE SOSTENIBILITÀ AMBIENTALE

MINORI EMISSIONI DI CO2 GRAZIE AL MINOR UTILIZZO DI MATERIE PRIME

Highly eco-friendly
The efficient use of raw materials reduces the CO2 emissions

Meilleure durabilité environnementale
Moins d'émissions de CO2 en réduisant l'utilisation des matières premières

Umweltfreundlich
Der Verbrauch von wenigen Rohstoffen reduziert die CO2 Emissionen

Environmental
Authorization
Included.



Packing	Size/mm	Pc/Box	Kg/Box	Sq.ft.
Rome	100 x 300	33	13.50 approx	10.76



+91 94263 05152
+91 90331 78653

export@rajglobal.net
marketing@rajglobal.net

www.rajglobal.net

Ishan Ceramic Zone,
Wing-C, National Highway 8,
Morbi - 2, Lalpar, Morbi-363642 (Gujarat) India

